

# Xerox® DocuMate™ 4799

High-performing scanner  
perfect for heavy duty scanning demands

- 112 ppm / 224 ipm\* at 300 dpi
- A3 (11" x 17") paper size
- ADF holds 350 pages†
- 3 Ultrasonic double feed detection sensors
- Create searchable PDF files to make it easy to find scanned documents
- Pre- & Post-Scan Imprinter (sold separately)
- Colour Space Compatibility with Xerox® iGen® digital press
- Xerox® FreeFlow Makeready® Supported

\* Landscape A4, b&w, gray & colour.  
† 20 lb., 75-80 g/m<sup>2</sup> paper



## Versatility and Reliability

Versatility, high-speed and superior reliability makes the Xerox® DocuMate™ 4799 a powerful scanner for demanding environments. With up to a 40,000 page per day duty cycle, this innovative workhorse scans up to 112 pages per minute and employs three advanced sensor systems: ultrasonic double feed detection, stapled document detection and intelligent feed control to ensure that your scan job will not be interrupted.

## Superior Document Handling

Documents of various sizes can be stacked together in the automatic feed tray without concern because the Xerox® DocuMate™ 4799 employs not one, but three ultrasonic double feed detection sensors to cover the entire width of a document. The scanner has another set of sensors designed to detect staples anywhere in a document. As soon as a staple is detected, the scanning process is halted—minimising damage to the optical glass and your documents. A third set of sensors constantly monitors the thickness of documents being fed into the scanner and automatically adjusts the roller pressure to ensure that all pages are accurately fed. This combination of sensors creates one of the most reliable feed mechanisms available today.

Up to 350 mix-sized documents can be stacked in the center of the automatic feeder, this eliminates the process of having to organise

your documents according to their size, so scanning is fast, easy and efficient. A pre- and post-scan imprinter is also available as an option to print text on the pages as they scan.

## Advanced Image Processing Technology

The Xerox® DocuMate™ 4799 provides both high quality image enhancement and increased productivity with Kofax® VRS™ Professional AIPE-EBC for auto-everything scanning, including Auto Rotation, Blank Page Deletion and Auto Colour Detect. VRS Professional improves your workflow and reduces the total time needed to scan even the largest volumes of mixed batch documents. Taken together, the Xerox® DocuMate™ 4799 and the Kofax VRS Professional bundle translate into real and measurable savings—fewer manual steps, reduced storage requirements and less operator intervention.

When mis-feed of the paper occasionally happens, the Xerox® DocuMate™ 4799 is very easy to maintain. Its unique “clamshell” design allows full access to the entire paper path, so you can clear paper jams or clean the unit without calling a service technician. The rollers are easy to replace and has a long service life.

Designed for document capture and workflow the Xerox® DocuMate™ 4799 is everything you ever wanted in a high-speed document scanner: productivity, reliability and innovation.

# Xerox® DocuMate™ 4799 Software Solutions

## Image Enhancement Technology

Visioneer® OneTouch® is integrated with image enhancing software such as Visioneer Acuity with DriverPLUS or Kofax® VRS™ (VirtualReScan), model dependent. Using advanced algorithms and dynamic thresholding, these software tools effectively improve the visual clarity of every document that you scan, applying intelligent correction to imperfect images, increasing optical character recognition (OCR) accuracy, and saving time.

### Image Enhancement

**Moiré Reduction** – reduces the unwanted patterns that may appear when newspapers, photos or textured paper is scanned.



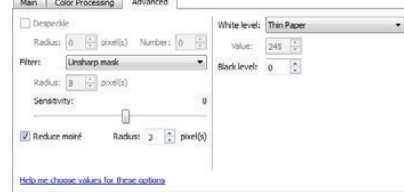
Moiré patterns



Moiré patterns removed

## Nuance® Searchable PDF Solution

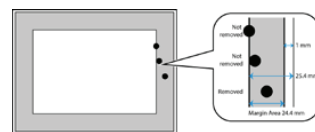
Nuance OmniPage® and PDF Converter provide everything you need to create, convert, edit, assemble and securely share searchable PDF files with precision OCR analysis, advanced layout detection and Logical Form Recognition™ (LFR) technology. Combining powerful functionality, superior Microsoft® Office® support and DMS integration into one package.



## Office Gemini Dokmee Capture

Dokmee Capture production scanning software provides all the features required for document capture, processing and reporting. It allows businesses both large and small to easily convert their scanned documents into digital files, capture images and information contained in them, and then organise it all into searchable data. This mission-critical business information is then placed into a centralised location to be easily searched, stored and retrieved when needed.

**Fill Margin Holes** – If you are scanning pages with punched holes in the margins, the scanner will detect and fill the holes in the final scan.



Xerox® DocuMate™ 4799 Product Specifications	
Type	ADF Colour Scanner
Scan Speed	106 ppm / 212 ipm (colour, grayscale, or b&w @ 150, 200, or 300 dpi, portrait, A4) 112 ppm / 224 ipm (colour, grayscale, or b&w @ 150, 200, or 300 dpi, landscape A4)
Scan Method	Automatic Document Feeder (ADF)
Image Sensor	Dual Colour CIS
Light Source	Xenon Lamp
Background	Switchable black or white background
Optical Resolution	600 dpi
Output Bit Depth	24-bit colour, 8-bit grayscale, 1-bit black & white
Other Functions	Length control, barcode detection, patch code detection, Automatic separation, control sheet, long paper mode
Interface	Hi-speed USB 2.0 (1.1 compatible)
Detection	Ultrasonic double feed detection (3 positions), stapled document detection
Accessories (Options)	Pre- & Post-Scan Imprinter
ADF Minimum Document Size	1.9" x 2.8" (48 mm x 70 mm)
ADF Maximum Document Size	11.7" x 17" (297 x 432 mm); Long document mode up to 100" (2540 mm)
ADF Capacity	Up to 350 sheets (20 lb., 75-80 g/m <sup>2</sup> paper)
Document Weight	Thin mode: 5 - 13 lbs. (20 - 50 g/m <sup>2</sup> ) Normal mode: 13 - 42 lbs. (50 - 157 g/m <sup>2</sup> ) Thick mode: 42 - 56 lbs. (157 - 209 g/m <sup>2</sup> ) Auto mode: 5 - 42 lbs. (20 - 157 g/m <sup>2</sup> )
Document Thickness	1.9 - 7.9 mils (0.04 - 0.2 mm) Straight path: max. 23.6 mils (0.6 mm)
Duty Cycle	40,000 pages/day
Power Requirement	AC 100 – 240 V, 50/60 Hz
Power Consumption	150 watts while scanning 70 watts on standby 5.3 watts or less in Sleep Mode
Operating Environment	Temperature: 59°F - 86°F (15°C - 30°C) Humidity: 10 - 80% RH
Dimensions	18.7"(w) x 23"(d) x 13"(h) (474 x 585 x 329 mm)
Weight	55 lbs. (25 kg)

## PC Minimum System Requirements

- Intel® Pentium® 4
- Windows 8 / 7 / Vista® / XP®
- 2GB RAM
- 350 MB available hard disk space
- DVD-ROM drive
- USB port.

## Software

- Kofax VRS Pro
- Nuance® OmniPage® Pro
- Nuance PDF Converter
- Office Gemini Dokmee Capture
- Visioneer OneTouch
- Visioneer Acuity
- Scanner Drivers: DriverPLUS TWAIN™, EMC Captiva ISIS®

\*\*\* Dokmee Capture is not supported on Microsoft Windows XP

† Kofax VRS 4.5 is not supported on Microsoft Windows 8



©2014 Xerox Corporation and Fuji Xerox Asia Pacific Pte Ltd. All rights reserved. Xerox®, Fuji Xerox Asia Pacific Pte Ltd, Xerox and Design®, DocuMate™, FreeFlow Makeready® and iGen® are registered trademarks of Xerox Corporation in the United States and other countries, and are used under license from Xerox Corporation. Visioneer® is an authorised trademark licensee of Xerox®. Visioneer® and Visioneer OneTouch® are trademarks of Visioneer, Inc. Kofax®, VirtualReScan™ and VRS™ are trademarks of Kofax, Inc. Nuance® and OmniPage® are trademarks of Nuance Communications, Inc. or its affiliates in the United States and/or other countries. Dokmee Capture® is a registered trademark of Office Gemini. Microsoft®, Windows Vista®, Windows®, the Windows logo and XP® are trademarks of Microsoft Corporation in the United States and/or other countries. Intel® and Pentium® are trademarks of Intel Corporation in the U.S. and/or other countries. TWAIN™ is a trademark of TWAIN Working Group. EMC®, Captiva®, and ISIS® are trademarks of EMC Corporation. ENERGY STAR® and the ENERGY STAR mark are registered trademarks owned by the U.S. Environmental Protection Agency. Universal Serial Bus is a trademark of USB Implementers Forum, Inc. (USB-IF). All other trademarks are the property of their respective owners and are hereby acknowledged. Prices, features, specifications, capabilities, appearance and availability of Xerox® products and services are subject to change without notice. MARS5008

astragraphia

### PT ASTRA GRAPHIA TBK

HEAD OFFICE (021) 390 9444 • JKT I, II, III (021) 657 04071 • JKT IV (021) 782 9182 • JAKARTA V, VI, VII (021) 522 0330 • Bogor (0251) 837 2708 • TANGERANG (021) 552 6818 • Cilegon (0254) 848 4251 • KARAWANG (021) 8261 6042 • Karawang (0267) 644 441; 643 093 • Cikampek & Cikarang (0264) 837 1306 • BANDUNG (022) 420 1032; 420 4564 • Cirebon (0231) 226 087 • SEMARANG (024) 844 8880; 844 8881 • Solo (0271) 724 814 • Yogyakarta (0274) 582 016 • Purwokerto (0281) 625 270 0813 25725 999 • Tegal (0283) 343 362 • SURABAYA 1 (031) 534 0175; 548 2682 (direct) • Kediri (0354) 770 523 • Gresik (031) 9225 5066 • SURABAYA 2 (031) 534 0175; 548 2682 (direct) • Malang (0341) 480 167 • Jember (0331) 333 941 0812 323 8189 • Pasuruan (0343) 630 678 0813 3292 9099 • DENPASAR (0361) 410 277; 433 709; 432 734 • Mataram/Lombok (0370) 645 582 • Kupang (0380) 833 726 • Benete 0812 382 6351 • Timor Leste PT Astragraphia Dilli (670) 7234 726; 7339 221 • MEDAN (061) 787 1000 • Banda Aceh 0853 7206 7716 • Pematang Siantar 0812 6563 064 • Rantau Prapat 0812 6310 7394 • Sibolga 0852 77 888 353 • BATAM (0778) 412 173; 412 363 • Bintan 0813 6315 7231 • PEKANBARU (0761) 33519; 47756 • Pangkajene Kerinci (0761) 43969 0812 6783 816 • Duri 0812 6709 683 • Padang 0811 6658 551 • Perawang 0812 7648 509 • Muara Bungo (0747) 322 564 0813 6772 9908 • Dumai 0853 6467 7791 • Jambi (0741) 445 382 • PALEMBANG (0711) 355 100 • Bangka Belitung (0717) 431 855; 7012 558 0819 9553 3557 • Tanjung Enim (0734) 451 552 0821 7684 3865 • Lampung (0721) 251106 0821 8046 3455 • Bengkulu (0736) 540 9602 0852 2007 4640 • BALIKPAPAN (0542) 733 307; 731 293 • Samarinda (0541) 625 2264 • Tarakan (0551) 22108 • Berau (0554) 25763 • Bontang (0548) 303 6692 • Sangatta (0549) 22456 • Pontianak (0561) 707 7140 • BANJARMASIN (0511) 325 2520; 326 1804 • Palangkaraya (0536) 323 5834 • Batu Licin (0518) 71302 • Tanjung (0526) 202 2827 • MAKASSAR (0411) 8111 811; 854 868; 858 901 • Kendari (0401) 319 3250 • Sorowako 0811 440 076 • Ambon (0911) 311 554 • Biak (0981) 23416 • Jayapura (0967) 523 349 • Timika (0901) 323 511 • Manokwari (0986) 214 326 • MANADO (0431) 857 643; 857 683; 857 543 • Palu (0451) 457 767 0811 758 0789 • Sorong (0951) 331 569 • Luwuk 0853 2022 8257 • Gorontalo 0853 4420 7313